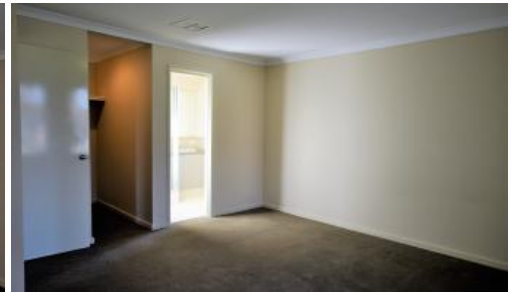


Leased

14 Kyle Way, Canning Vale



BRILLIANT FAMILY HOME!!

This fantastic 4 bedroom, 2 bathroom spacious home is big enough for all the family with 3 separate living areas to sprawl out in. Situated in a family-friendly street and walking distance to Caladenia Primary School and St Emilie's Primary School for the little ones and Canning Vale College for the older kids. Features include:

4 large bedrooms (3 with WIR's)

2 bathrooms

Ducted air-conditioning

Double garage

Formal lounge to the front of the home

Open plan kitchen, living and dining room

Games room to the rear

Covered Alfresco

Pets will be considered, available 28th September 2021. Please email your interest through to Kirsty for a viewing.

WHAT TO DO NOW:

To register your interest in viewing this property, please send through an email enquiry with your details.

Once a viewing time has been arranged, you will be emailed the available

 4  2  1

Price	\$540PW
Property Type	Rental
Property ID	189

AGENT DETAILS

Kirsty Styles - 0438 188 011

OFFICE DETAILS

Bricks & Mortar Real Estate
Solutions
15-16/64-66 Bannister Rd Canning
Vale WA 6155 Australia
08 6140 6619

inspection time. You must register before we can allow you entry in to the property.

You must register your details to ensure you receive updates on any unforeseen changes or cancellations of viewing times. A viewing time may be cancelled if no one registers to attend.

****You must view the property first with a representative from Bricks & Mortar Real Estate Solutions prior to applying**** We do not accept applications before a viewing. We do not accept 1 form applications.

The above information provided has been furnished to us by the vendor/s. We have not verified whether or not that information is accurate and do not have any belief in one way or the other in its accuracy. We do not accept any responsibility to any person for its accuracy and do no more than pass it on. All interested parties should make and rely upon their own inquiries in order to determine whether or not this information is in fact accurate.